

# THE SPACESAVER OF THE STORAGE LIFT WORLD

THE LISTA LIFT S





# HUGE POSSIBILITIES IN A MINIMUM OF SPACE

At only 1.6 m deep, the LISTA Lift S is the ultimate storage lift: as capable of bearing loads as something bigger, yet as compact and space-saving as a paternoster. The overall capacity is up to 25 000 kg at 7 m high. It has optimal capacity. The system enables the trays to position things dynamically and flexibly within the lift, so that you can make the most of every centimetre of its storage space.

The LISTA Lift S is similarly efficient when it comes to maintenance and energy consumption. At less than 1.2 kW/h, the system represents an impressively cost-effective solution. It also requires minimal care and maintenance: the drive system does not need to be lubricated and is very easy to install and adjust thanks to the self-centring pulleys. The extensive range of accessories allows safe and reliable storage of all sorts of materials and products. What this means: The LISTA Lift S gives you maximum efficiency and flexibility, even with a very limited footprint.







### **Reduced footprint, optimum storage density**

- from just 2.9 m<sup>2</sup> space requirement and 1.6 m depth
- additional load of up to 25 000 kg
- dynamic positioning of the trays allows maximum utilisation of space



### **Great time savings and ergonomics**

- optimised picking times
- quick access
- short transport distances, optimised processes
- Material comes to the employee, so minimal physical stress



### **Reduced error frequency, improved stock control**

- automatic system, records picking activities
- easy to operate
- guided, controlled access to individual trays



### **Maximum flexibility**

- wide range of accessories: partition plates, partition panels, scanners, put-to-light, etc.
- suitable for three-phase voltage of 230 V



### **Minimal maintenance, low power consumption**

- lubrication-free drive belt system
- Electricity requirement less than 1.2 kW/h



### **Efficient management and top service**

- software-based control with the LISTA Warehouse Management System
- compatible with all conventional ERP systems
- custom planning and adaptation
- training and maintenance concepts
- 24 h service guarantee



## EASY TO INSTALL, EVEN EASIER TO OPERATE THE LISTA LIFT S IN PRACTICE



### Installation

The LISTA Lift S consists of a pre-assembled base, which enables quick installation and easy operation. As a rule, the storage system is ready for use within 48 hours of being delivered to your building. The controls can be implemented in three stages: In addition to easy access management, you can also use the flexible LISTA WMS warehouse management system. In addition, the Slim Lift can be quickly integrated into your ERP system.

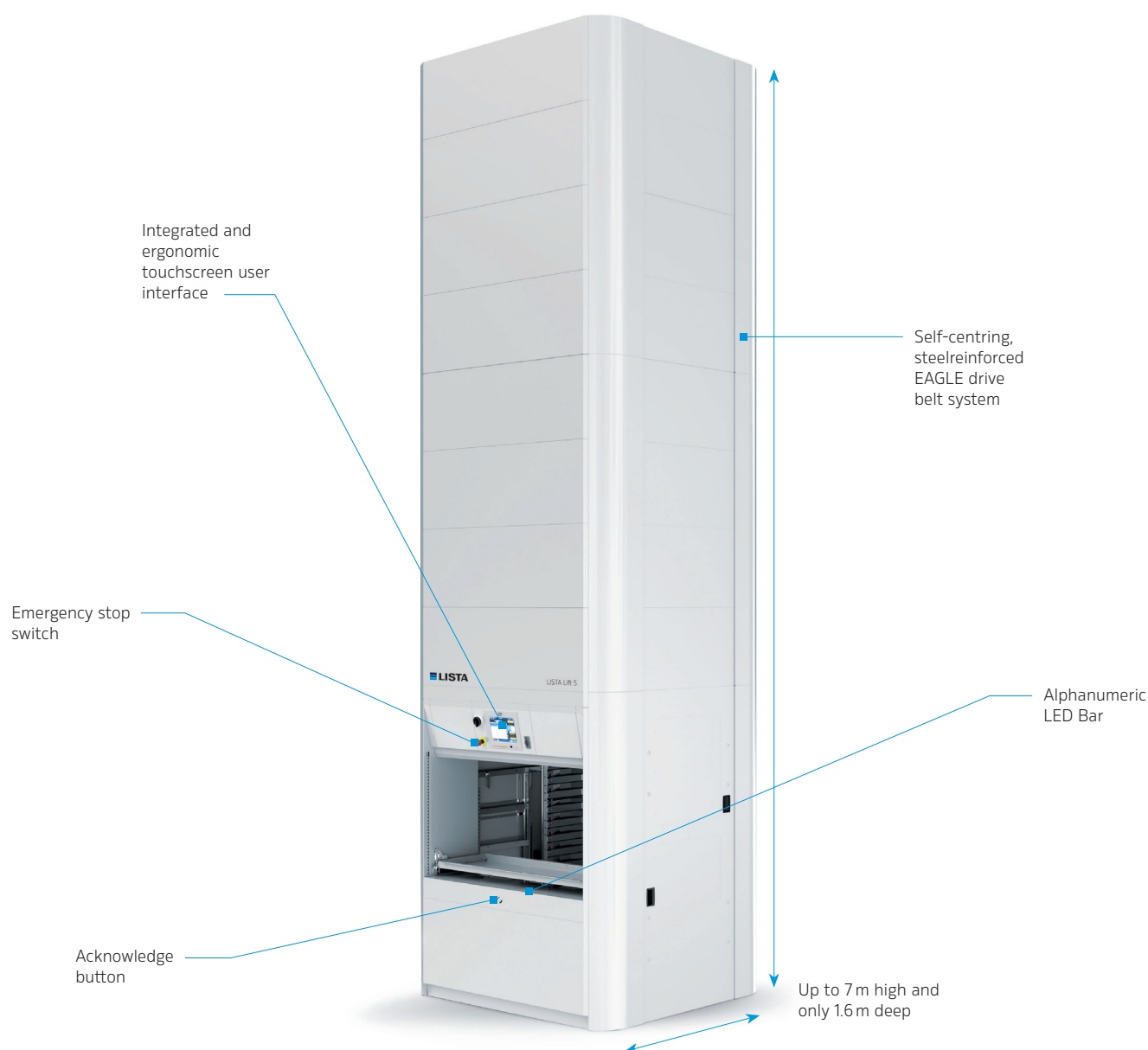
### Operation

Operating the LISTA Lift S is just as easy as installing it: a user-friendly touchscreen user interface and intuitive control elements integrated into the operating opening, such as acknowledge buttons of LED lamp strips, mean that you are bound to get to grips with the system within a matter of days. You'll be amazed at how quickly picking times and error rates can be reduced with the LISTA Lift S.



# ADVANTAGES IN FACTS AND FIGURES

## THE TECHNICAL FEATURES OF THE LISTA LIFT S



Tray width	1300 / 1900 / 2500 mm
Tray depth	425 mm
Tray wall height	45 mm
Appliance width	1685 / 2285 / 2885 mm
Appliance depth	1675 mm
Appliance height	variable from 2400 up to 7000 mm
Height increments	100 mm
Storage grid	25 mm
Net load per tray	350 kg
Gross load	up to 25 000 kg
Max. Stored goods height	650 mm

Tray access height	835 mm
Speed	up to 190 cycles per hour (depending on configuration)
Operating interface	10.4-inch touchscreen industry console (co-pilot)
Number of extractions	1
Type of extraction	internal with single extension
Min. power consumption	1.2 kW/h for Slim Lift 1.3, H = 7000 mm
Power supply	230 V single-phase and 400 V three-phase
Certification	TÜV-GS
Drive	EAGLE belt drive system, self-centring, steel-reinforced



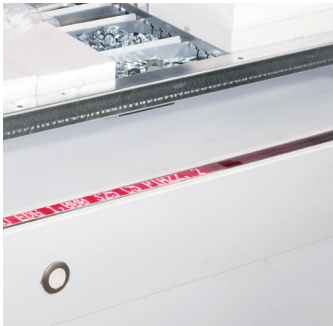
## ADDED FLEXIBILITY

### LISTA LIFT S ACCESSORIES



#### Tray accessories

Divide the trays of your LISTA Lift S flexibly with accessories such as slotted walls, partition panels and more, for secure and reliable storage of a wide variety of materials and products, from loose parts to boxes, bottles and cartons. The wide range of accessories allows you to divide the space as necessary to fit the goods to be stored at any time.



#### Visual operating aids

Optical operating aids such as LED strips or laser pointers allow you to identify the necessary stored goods quickly and thus help to significantly speed up picking processes. They assist the operator in their search for items in the trays and thus reduce the error rate significantly.



#### Access control

Various scanners protect the stored material against unauthorised access. This allows users to be created with individual access rights to trays and materials or compartments. Together with access via the console, you can also log in using a personalised tool, which makes operation even faster.



#### Productivity and security

Other accessories include 1D or 2D barcode readers for fast scanning of the stored goods without the need for manual checks, an integratable put-to-light, allowing you to process multiple or different orders at the same time, and a matching ESD system to protect sensitive goods.





## Dynamic systems – storage systems with Lista Lift

### Optimising space, optimising time, minimising costs

Lista storage systems are quick, safe and save space. They optimise space utilisation and increase access security of inventory items. Thanks to their speed and flexibility, they can increase the efficiency of logistics and production processes. With its modular design and flexible software solutions, Lista Lift can be effortlessly integrated into any business. Make use of our extensive know-how as an all-in-one system provider with tens of years of experience in dynamic systems and a widely established customer base.



### i Benefits

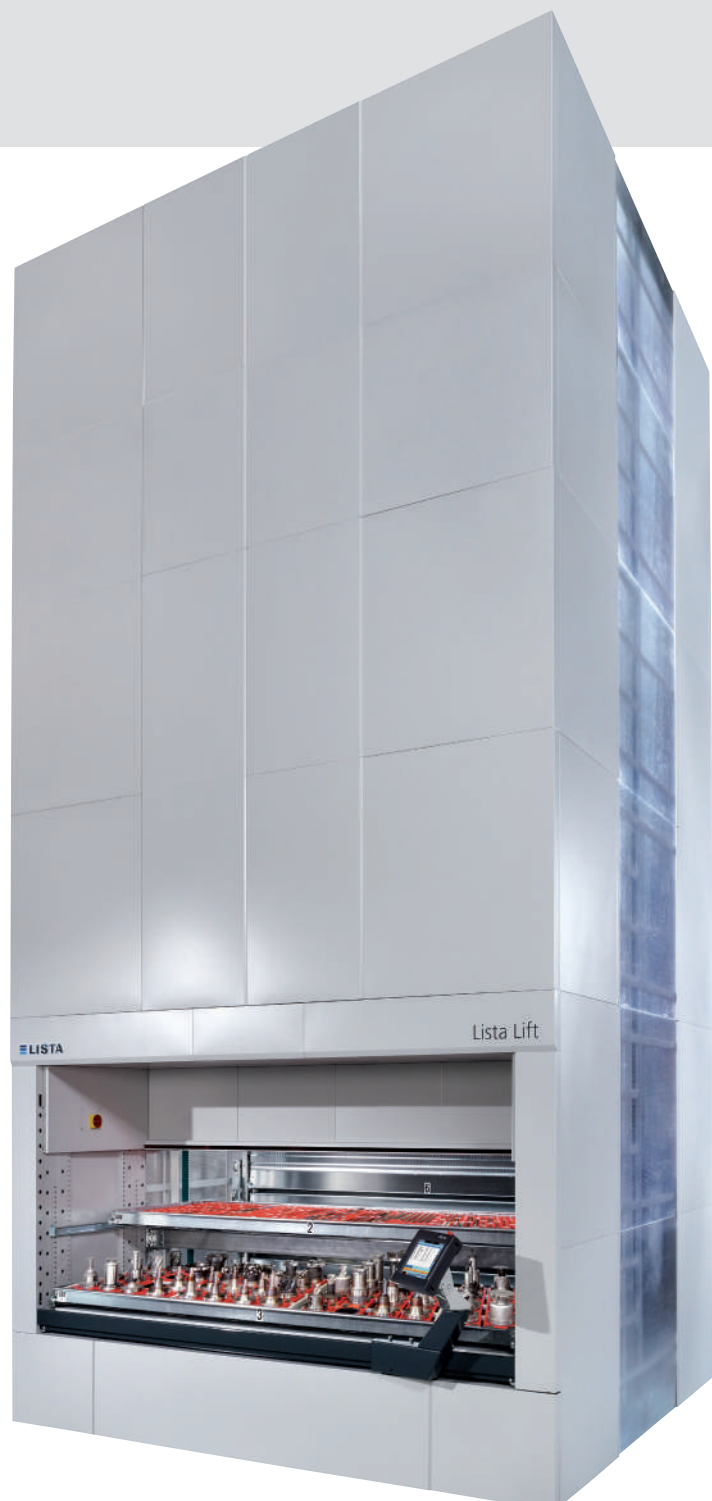
- Less picking effort thanks to high removal capacity
- High picking rates thanks to an intelligent storage process with the option of a second delivery level
- High storage density thanks to optimised storage locations
- The highly ergonomic design ensures minimum physical strain on stock removal
- Efficient safety concept using light barriers, emergency stop buttons and a fixedly installed safety ladder
- Weight and height detection systems ensure maximum system reliability
- Modern, mobile operator terminal with ergonomically adjustable touch screen and remote control function
- Modular design for storage systems tailored to your needs
- Maximum carrying capacity of supports thanks to flexible and versatile partition material
- Extensive service package with guaranteed 24-hour response



The Lista Lift can be used to manage all inventory items. Using this system you can achieve space-savings of up to 80%. In addition there is a noticeable time saving thanks to speedy access and moving goods over shorter distances.

## **i** Features

- Up to 14 m high, can be over several stories
- Up to 70'000 kg total load capacity
- Tray widths up to 4100 mm, with up to 750 kg load capacity
- Stored items are protected from dust and unauthorised access
- Storage control by means of intelligent warehouse management software
- Integration with existing WMS or ERP systems
- 10,4 inch high resolution touch-screen display
- Inset and external access hatches





# Innovations

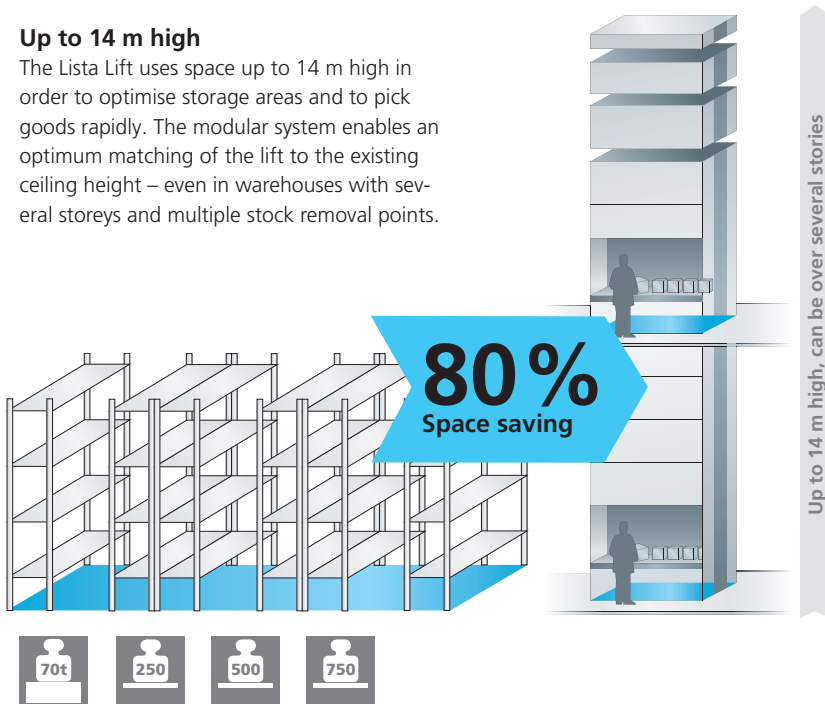


## Optimising space

### The intelligent modular system

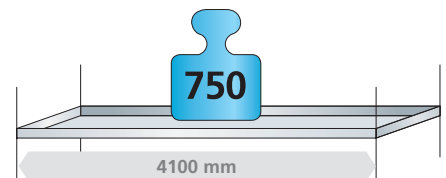
#### Up to 14 m high

The Lista Lift uses space up to 14 m high in order to optimise storage areas and to pick goods rapidly. The modular system enables an optimum matching of the lift to the existing ceiling height – even in warehouses with several storeys and multiple stock removal points.



#### Trays of up to 4100 mm with up to 750 kg load capacity

The variety of different types of trays enables perfect storage for every kind of item. The trays, which can take up to 750 kg load with a width of up to 4100 mm, can hold any inventory item from miniaturised parts to heavy structural components. The variety of partition materials can be used to match the size of the goods and guarantee totally secure and economic storage.



Eight sizes of supports with four widths (1900, 2500, 3100 and 4100 mm) and two depths (654 and 857 mm) with a carrying capacity of 250, 500 or 750 kg each and wall heights between 45 and 120 mm

#### Inventory item recognition and support brackets in slots 25 mm apart

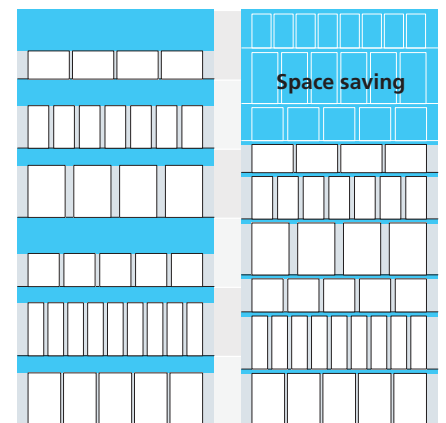
An electronic measurement system automatically measures the height of the inventory items and optimises the distances between stored items. Thanks to the special support brackets in closely packed 25 mm slots, the most diverse items can be stored extremely compactly and economically.



Height measurement in 25 mm increments



Wear resistant support brackets



Without item recognition

With item recognition  
25 mm slots

#### Lista partition materials

Between the flexible Lista partition materials and the different tray sizes, just about any inventory item can be stored in an organised and tidy manner.





## Optimising time

### An intelligent system for greater efficiency

#### Optimised picking times

Applying the principle "take the materials to the (wo)man" the required inventory is delivered directly and rapidly to the operator, which reduces access times and transport distances to a minimum. The modular structure together with the software enable a single operator to use several machines in one area.



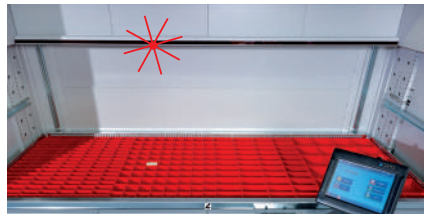
#### Quick and ergonomic delivery

Two-tier access hatches, which can be inset or external, are available and offer a very fast picking rate which reduces waiting times. While the operator loads the items onto or off one tray, the next tray to be processed is already being made ready in the second hatch position.



#### Adjustable operating console

The adjustable console offers optimum ergonomics and functionality even with a heavy picking schedule.



#### Position indicators

The position of the items in the stock removal opening can be visualised by means of an LED position indicator, a graphical position indicator or a laser pointer.



#### Controlled external access hatch

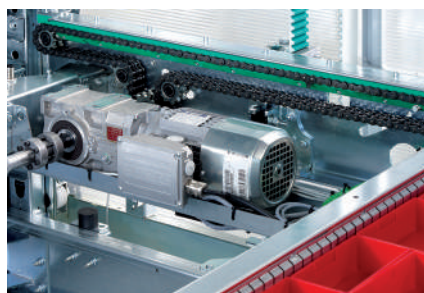
Multiple stock removal levels provide for high picking rates combined with a highly ergonomic and safe workplace design. In addition, this reduces the need for handling equipment for simple unloading and assembly of components.

## Minimising costs

### Sustainability and good value for money

#### Efficient motors and quiet running

The powerful and efficient motors guarantee low energy consumption across the entire range of models - even for the heavy duty models. They are driven using quiet-running toothed drive belts. Lista Lift optionally offers a highly efficient energy recovery system on the down-stroke of the tray.



#### Simple maintenance

All electronic components are located in an easily accessible control drawer below the access hatch. The presence of a ladder both left and right inside the installation means that access to the upper areas of the installation is made much simpler for service technicians.



#### Energy saving LED lighting

An important benefit of the LED illumination is the low level of heat it generates, combined with its long useful lifetime. In addition you benefit from lower power consumption and elimination of maintenance costs.

#### i Return on Investment



- Safe working environment and reduced staff costs
- By saving existing floorspace this can then be used for other purposes
- Improved internal company processes increase productivity and reduce waiting times
- Automatically controlled inventory levels allow lean inventory management

## Efficient inventory management

### The modular solution approach from Lista

Reliable Lista WMS software enables companies in any industry to manage their inventory economically. The user-friendly software covers everything – from a simple application to a highly complex inventory management system. Modular extension options are provided for integration into existing IT environments (SAP, Navision, Baan, etc.) as required.

#### Integration level 1

##### OS

**Operating system:**  
**Access management and controls**  
Machine control  
(included in the scope of delivery)



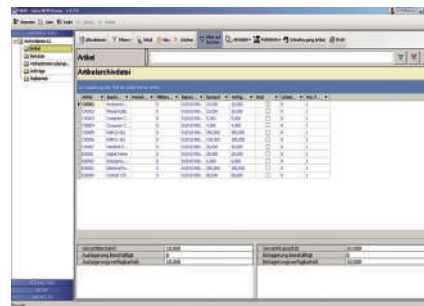
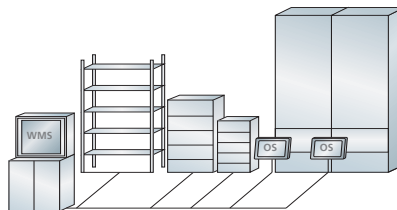
#### i Features

- Access to all machine functions
- General configuration and simple operation using the touch screen display
- Specific access for different user groups using passwords
- Context-sensitive help to deal with any problems
- Automatic maintenance management
- Picking list from tray

#### Integration level 2

##### OS + WMS

**Warehouse management software:**  
**Extensive, extensible warehouse management**  
Machine control + software  
on separate computers



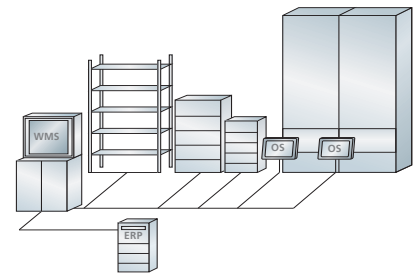
#### i Features

- Management and control of several automatic or manual warehouses
- Management of production batches
- Determining optimum routing
- Reports on inventory levels and statistical analyses
- Preparing orders, packing lists
- Managing goods receipt area, dispatch, quality control etc.
- Management and control of inventory movements
- Controlled issues and assemblies with end-to-end traceability through the log file

#### Integration level 3

##### OS + WMS + ERP

**Full package with ERP integration**  
Machine control + software on separate computers + modular integration into the customer's IT environment (e.g. SAP, Navision, Baan, etc.)



#### i Features

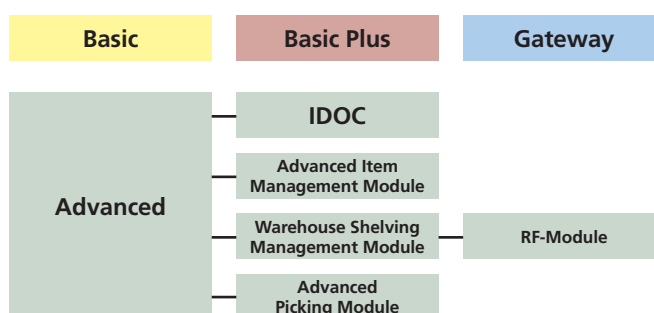
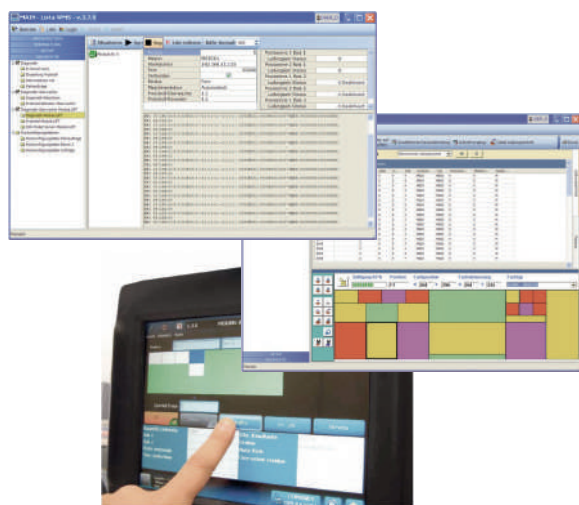
- Complete integration with existing logistics processes
- Compatible with all well-known ERP systems
- Automatic transfer of orders from the ERP system to the operator
- Batch processing for increased picking performance and rapid order processing
- Support for paperless logistics processes
- Efficient materials flow processes



## Lista WMS software

### The intelligent, EPR-capable warehouse management software

The Lista WMS warehouse management software is based on the relational database Microsoft SQL Server Express 2008. The interface has been developed in a Microsoft.net environment, and the programme can be installed on various PCs in the network, depending on the product configuration, in order to enable full, multi-client warehouse management. With the Lista WMS warehouse management software, Lista fulfils a wide range of customer requirements. Its base module is the WMS Basic version, which covers the management of item files and operations as well as user management. In addition to the lift systems, the Basic Plus module also ensures the intelligent management of existing manual storage locations. The entire management can be controlled with the Advanced module via all customary ERP systems.



### i Benefits

- Time saving solution
- Various interfaces
- Intuitive software that speeds up picking and handling
- Simple operation

## Lista Service

### Always the best advice from Lista

#### Analysis of requirements

In discussion with customers, each customer's individual requirements are defined and the on-site conditions are assessed.

#### Optimisation and planning

Possibilities are identified for a storage optimisation approach that includes all factors such as space, products and the system. All important aspects such as occupational safety and building design are incorporated in the planning process.

#### Installation and training

Competent, Lista-trained technicians will install the system on site and train the future users. This ensures trouble-free commissioning.

#### After-sales service

Even after installation, qualified staff will be available at all times to provide you with advice and assistance when needed, for instance for revisions, modifications, relocations or on-site training. Many years of experience in the handling of maintenance and support concepts with 24-hour response round off our service package.



# LISTA AS A PARTNER WELCOME TO THE NO.1

LISTA offers organisation. With success, experience and system. For more than 70 years, we have offered our customers concepts for more organised and efficient working. Because we offer them more than just a high-quality product, competent advice and a wide range

of services: the LISTA system creates perfect interlocking solutions for smooth work processes. And this makes us a leading partner in the area of workspace and storage equipment worldwide.



**+ Comprehensive range**  
from A for access control to W for workstation systems

**+ One system, countless possibilities**  
through freely combinable modules

**+ Bespoke solutions**  
for customers with specific requirements

**+ Maximum flexibility**  
with a choice of colours,  
configuration options and more

**+ Wide range of services**  
such as training, assembly, marking, etc.

**+ Expert planning**  
Individual and precisely fitting

**+ First-class references**  
from more than 100,000 prestigious companies worldwide

**+ Worldwide distribution and service network**  
for unlimited customer service