

# Automotive shank toolholders SH



**Applications** Automotive shank toolholders with trapezoidal thread are supplied with a setting nut. With this type of toolholder, ER, ER-GB and PCM ET1 collets can be used.

**Special applications** A quick-change setting nut according to system BILZ is available as an option. This option must be ordered separately. When extra high clamping force is needed, e.g., when tapping with ER-GB, we recommend the use of our friction-bearing clamping nuts Hi-Q®/ERB and Hi-Q®/ERBC.

**Matched tooling system for best fit** For highest precision and best results the whole system counts. Therefore REGO-FIX components are carefully matched for optimum fit and accuracy. This guarantees the best runout and balance.

*For the influence of runout on tool life see the graph on page 270.*

*Accessories are not included in delivery.*

#### Expert advice

We recommend tightening the clamping nuts with our torque wrench.

*For tightening torque recommendations, please refer to page 293.*

# Automotive shank toolholders SH

SH

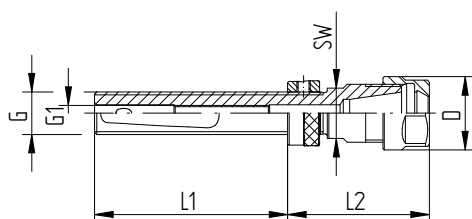
DIN 6327-C

Type	Part no.	Dimensions [mm]			G	G1	SW	Accessory
		D	L1	L2				Wrench
SH 12								
SH 12 x 050/ER 11	2612.11104	19	50	46.6	Tr 12 x 1.5	M 5	12	E 11 P
SH 16								
SH 16 x 073/ER 16	2616.11604	28	73	53.5	Tr 16 x 1.5	M 6	19	E 16 P
SH 20								
SH 20 x 076/ER 20	2620.12004	34	76	59.5	Tr 20 x 2	M 8	22	E 20 P
SH 28								
SH 28 x 083/ER 25	2628.12504	42	83	57	Tr 28 x 2	M 18 x 2	28	E 25

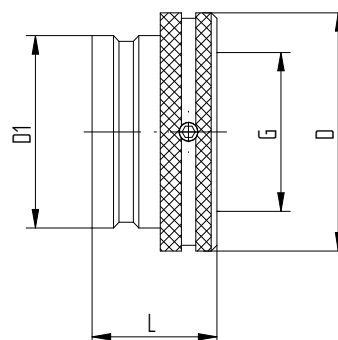
Included in delivery: toolholders come with Hi-Q® / ER clamping nut, back-up screw, setting nut and Woodruff-key

## Save time with our quick-change setting nut.

Type	Part no.	Dimensions [mm]			G
		D	D1	L	
Quick-change setting nut (System BILZ)					
SSM 12	7238.12000	22	16.4	18	Tr 12 x 1.5
SSM 16	7238.16000	26	19.9	18.5	Tr 16 x 1.5
SSM 20	7238.20000	33	25.4	20	Tr 20 x 2
SSM 28	7238.28000	42	33.9	22	Tr 28 x 2



SH/ER



SSM